

# TRINITY

VRINDAVAN

A REALM BETWEEN

## Heaven & Earth

Limited collection residences  
beside the Braj Corridor, where  
Heritage and Horizon meet.



**RERA APPROVED**

<https://www.uprera.in>  
UPRERAPR1783464/02/2026  
Start/Launch Date: 14-12-2025  
Collection A/c No. 50200116971731  
IFSC Code: HDFC0000268

Bank & Branch: HDFC Bank,  
Main Branch, 169/2, Gaushtala Road,  
Opp. BSA College, Bypass Road, Mishraura (UP)  
Note: Buyers should deposit all money/installments/home loan  
instalments in the Collection Account only





## VRINDAVAN

*An ancient continuum of  
consciousness that never paused  
— only transformed.*

From the forests of Vrindavan to the hearts across  
the world, Krishna's melody continues to travel  
— not as sound, but as consciousness.



# The Legend of Vrindavan

From flute to forest,  
Krishna's presence lingers  
like light upon water.

**Some places preserve history.  
Vrindavan preserves awareness.**

For five millennia, it has remained the quiet eye of India's spiritual cyclone — where belief is not ritual, but rhythm. A landscape shaped not by architecture, but by intention.

Here, God is not worshipped from afar, but experienced within. Krishna's legacy is not in temples or tales — it is in the collective consciousness of devotion that sustains this land.

Time may have passed, dynasties may have shifted, yet Vrindavan has never aged — because what is eternal cannot erode. It simply changes form, just as spirit changes bodies.

To stand here is to stand inside a continuum — where mythology becomes memory, and memory becomes movement.



# The Global Devotion

From temples to art, from music to mindfulness, his essence finds new form yet remains eternal.

From the soft sands of the Yamuna to the skyline of modern metropolises, Krishna's presence flows like music — reshaping the world's idea of devotion. He is not contained within temples or traditions; he moves in hearts, colors, festivals, and thought. n that sustains this land.

Across cultures, Krishna represents the unspoken truth of existence — that to love, to create, and to surrender is to live divinely.

What began in the sanctity of Vrindavan has become the song of humanity itself.

# The Song That Crossed Oceans

Krishna's journey from the sacred groves of Vrindavan to the soul of the world is not a voyage of faith, but of realization.

He transcends language, lineage, and belief — representing the most complete understanding of life's duality.

To the seeker, he is awareness; to the artist, inspiration; to the philosopher, truth. Krishna is the synthesis of motion and stillness, of laughter and wisdom, of creation and surrender.

Across the world, his consciousness lives — not as a doctrine, but as the quiet art of living beautifully.

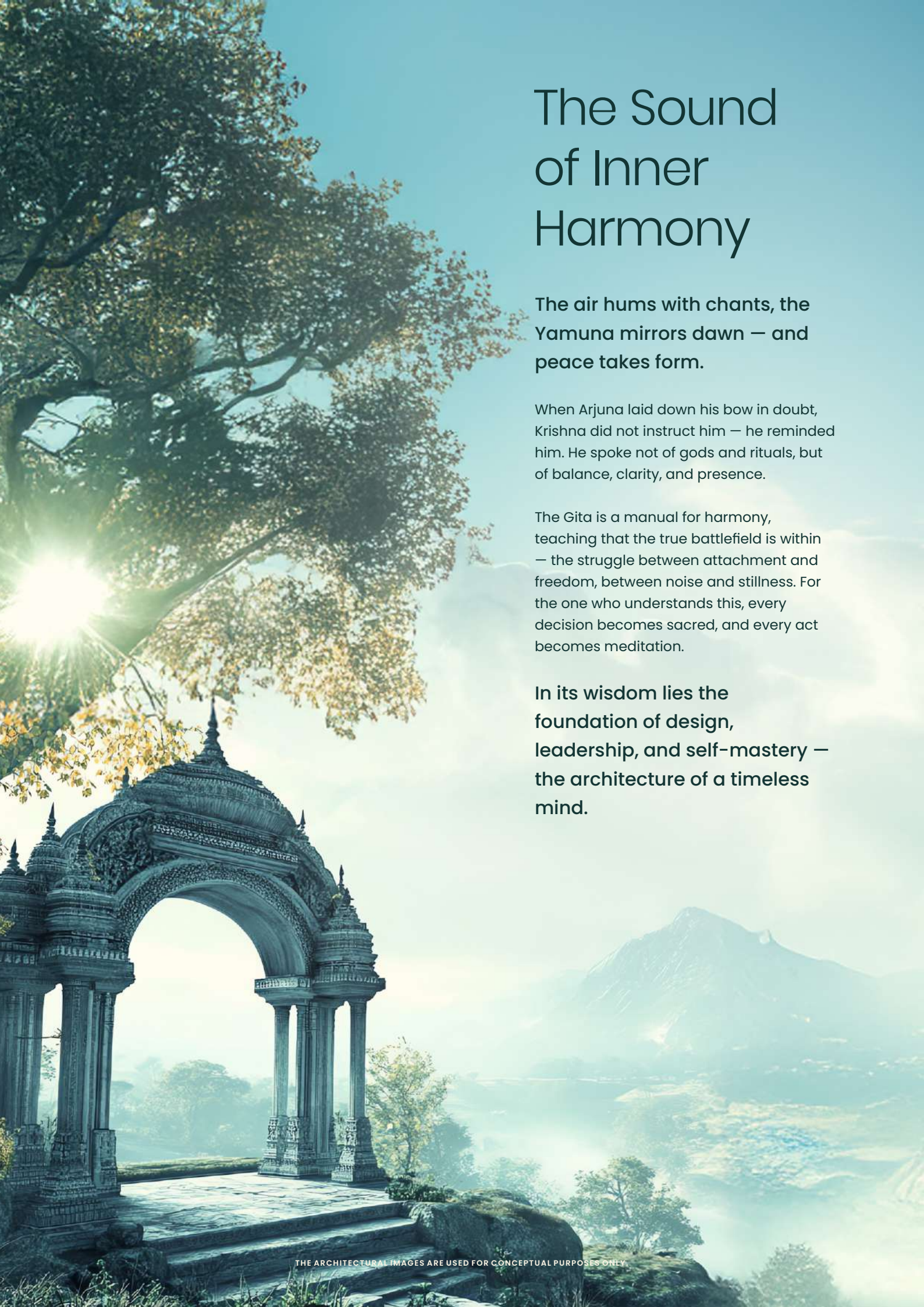
**In every age, in every mind that  
learns to love without attachment,  
Krishna is reborn.**

FROM VRINDAVANTO  
THE WORLD



*Krishna's essence flows  
beyond time, inviting  
every heart to  
remember its own  
divinity.*

The message of Krishna is neither ancient nor distant — it is the quiet invitation to balance mind, body, and soul in every era.



# The Sound of Inner Harmony

The air hums with chants, the Yamuna mirrors dawn — and peace takes form.

When Arjuna laid down his bow in doubt, Krishna did not instruct him — he reminded him. He spoke not of gods and rituals, but of balance, clarity, and presence.

The Gita is a manual for harmony, teaching that the true battlefield is within — the struggle between attachment and freedom, between noise and stillness. For the one who understands this, every decision becomes sacred, and every act becomes meditation.

In its wisdom lies the foundation of design, leadership, and self-mastery — the architecture of a timeless mind.

# The Five Forces of Inspiration

Every timeless creation begins with clarity of inspiration. Here, it begins with five inspirations that mirror life itself — Nature, Harmony, Legacy, Community, and Spirit.

Nature gives balance, Harmony gives proportion, Legacy gives meaning, Community gives belonging, and Spirit gives purpose.

Together, they shape not only design but also emotion — creating a living environment that resonates with both heart and heritage.

These inspirations don't merely define architecture; they define awareness — the awareness of what it means to build with meaning.

This vision evolves from awareness, not ambition — built on the understanding that the finest designs are those that disappear into peace.



## Nature:

The grounding force. Inspired by Vrindavan's balance, it reflects organic design, open breathing spaces, and an unbroken dialogue with earth and sky.

---



## Harmony:

The invisible order that connects everything — from proportion to peace, from architecture to emotion.

---



## Legacy:

The bridge between past and future — celebrating cultural memory while creating a contemporary story worth inheriting.

---



## Community:

The pulse of belonging — design that encourages interaction, shared joy, and collective growth.

---



## Spirit:

The unseen energy — the purpose behind the project, guiding it beyond creation into consciousness.



# A Living Ecosystem of Harmony

Here, every typology — Plot, Villa, Villament, Floor — reflects a distinct rhythm of life, yet contributes to a shared harmony.

The result is a community where freedom, luxury, connection, and accessibility coexist effortlessly.

At its spiritual center, the Mandir stands as a beacon of calm — reminding every resident that true living is not about owning space, but finding balance within it.

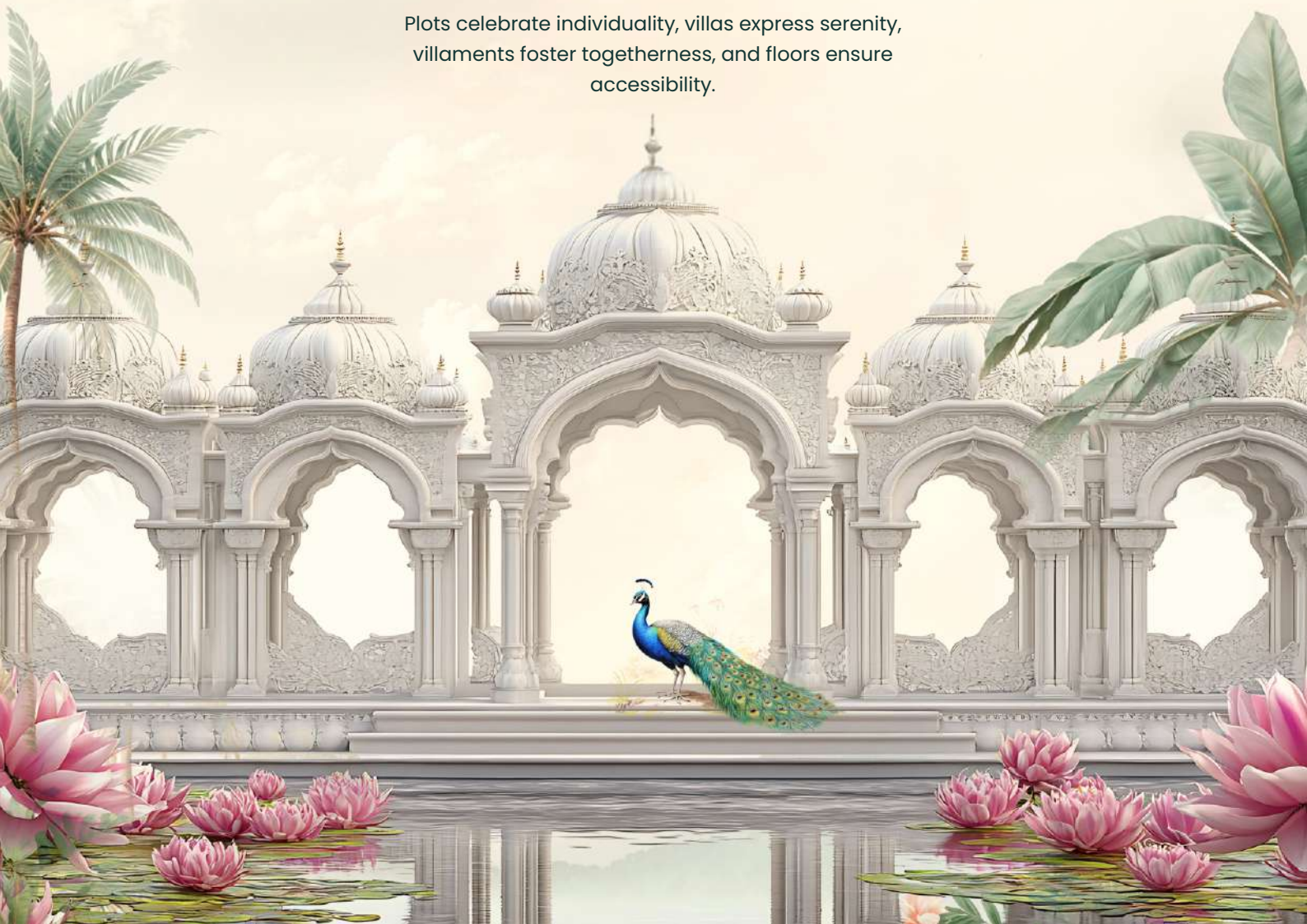
This is a rare union of design, devotion, and destination — a complete world within itself.

A living ecosystem thrives when diversity creates balance.



*A holistic ecosystem offering spaces for every way of life.*

Plots celebrate individuality, villas express serenity, villaments foster togetherness, and floors ensure accessibility.



# A Home That Breathes With You

Home is not where you live; it's where you feel aligned.

Every detail in these residences — from the way light enters to how air moves — is designed around the rhythms of real life. The architecture listens; the space responds.

There's a flow between the indoors and outdoors that makes every day feel natural, intuitive, and alive.

Here, luxury is not defined by excess, but by balance — by the quiet joy of living beautifully, effortlessly, and consciously.



## Human Scale Design:

Spacious yet intimate — rooms that hold conversation, not confinement.

---



## Natural Illumination:

Optimized orientation ensures that light and shadow form the home's daily dialogue.

---



## Thermal Balance:

Smart material use maintains comfort through all seasons without compromising aesthetic appeal.

---



## Spatial Logic:

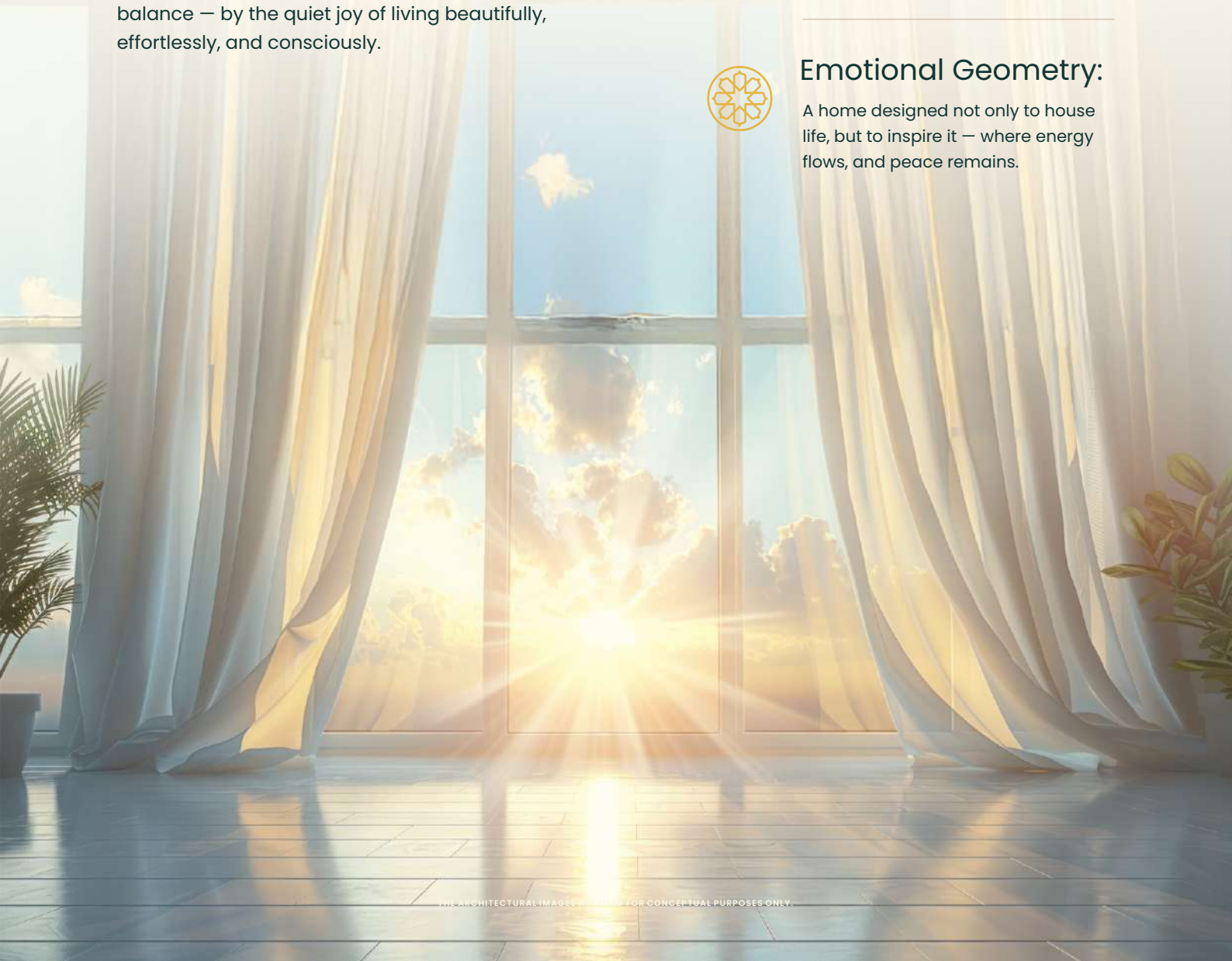
Every layout built on intuitive movement — from private quiet zones to open social areas.

---



## Emotional Geometry:

A home designed not only to house life, but to inspire it — where energy flows, and peace remains.



# Uttar Pradesh – The \$1 Trillion Momentum

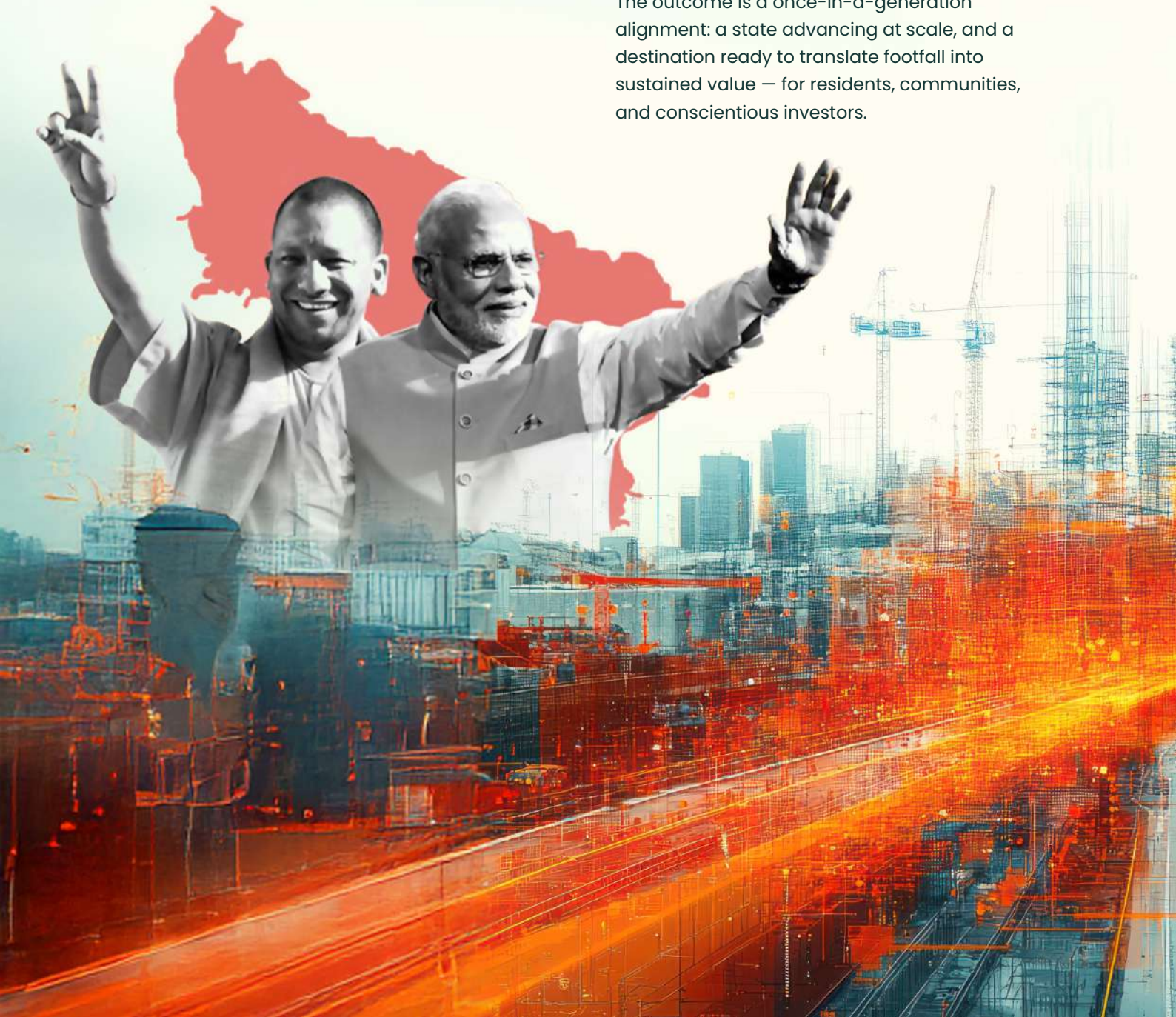
A state-scale strategy that prioritizes industry, infrastructure, and inclusive tourism.

Uttar Pradesh's \$1 trillion vision is not an aspiration – it is an operational roadmap translating policy into projects and access into opportunity.

Industrial expansion, integrated expressways, and airport-led development have strengthened investor confidence across sectors.

For Vrindavan and the larger Braj region, this macro momentum converges as a high-value cultural economy – where spiritual heritage, tourism scale, and infrastructure meet.

The outcome is a once-in-a-generation alignment: a state advancing at scale, and a destination ready to translate footfall into sustained value – for residents, communities, and conscientious investors.



## ✦ Tourism Engine

With **~65 crore** visitors statewide in 2024 and **~7.9 crore** in Mathura–Vrindavan alone (2023), the experience economy is poised for compounding growth.

## ✦ Policy Projects

The **500 crore** Banke Bihari Temple Corridor and a proposed **30,000 crore** Braj master plan signal long-horizon investment in heritage infrastructure.

## ✦ Industrial Confidence

**4,000+** new factories in FY 2024–25; broader industrialization spreading beyond traditional hubs.

## ✦ Expressway Ecology

YEIDA's master planning around the Yamuna Expressway aligns tourism, industry, and the airport economy — a decisive advantage for Braj.

## ✦ Sustained Focus

The official Invest UP agenda continues to place tourism, IT/ITeS, manufacturing, and services as pillars toward the \$1 trillion milestone.

### THE LONG ARC OF VALUE

*A state-scale strategy that prioritizes industry, infrastructure, and inclusive tourism.*

Public focus on temple precincts and tourism management enhances the visitor economy.

# Pilgrimage Scaled to Hospitality

Hospitality in Braj is entering a maturity phase — moving from unmanaged volume to curated value.

As access improves and precincts are upgraded, the mix of offerings can evolve toward premium experiences, wellness stays, and branded residences.

With one of India's deepest cultural funnels and consistent year-round inflow, the market is positioned for sustainable hospitality growth — measured in length of stay, average rates, and guest satisfaction rather than only headcount.



## ✦ Statewide Surge

Uttar Pradesh's annual tourist volume rose from **21.5 crore (2016) to 64.9 crore (2024)** — a net increase of 43.4 crore, lifting UP's national share from 13.1% to 18.9%.

## ✦ Braj Impact

Mathura–Vrindavan hosted 7.9 crore visitors in 2023, with an estimated local spend of 15,380 crore; projections point to **14.7 crore by 2030**.

## ✦ Stay Mix Evolution

Of the 7.9 crore, **43 lakh were overnight stays** while ~7.5 crore were same-day visitors — a conversion opportunity for premium hospitality and wellness stays.

## ✦ National Tailwind

India's hospitality sector projects **~49% unfiltered room-supply growth** in the pipeline over the medium term, signalling robust operator confidence.

## ✦ Policy Catalyst

Heritage and corridor investments (e.g., temple precinct upgrades and regional master plans) are expanding capacity, access, and visitor management.

### THE HOSPITALITY CURVE OF BRAJ

*The next decade belongs to  
experience and wellness  
stays.*

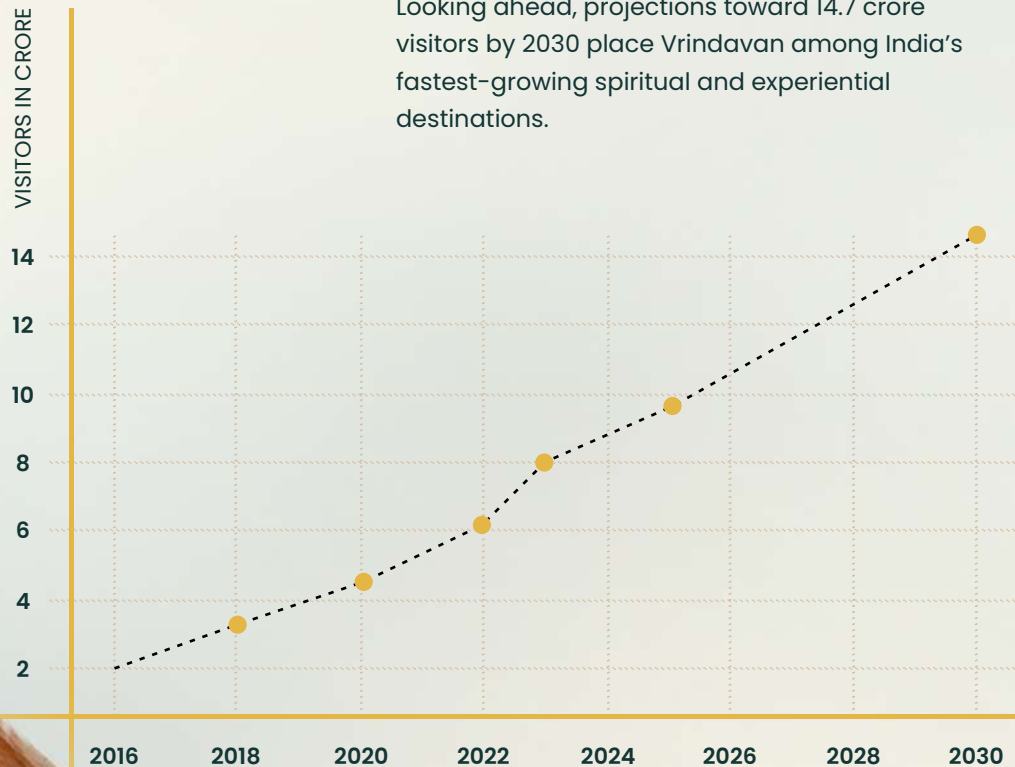
The numbers tell a consistent story: rising visitor volumes, higher spend, and a clear shift from day trips to overnight stays.

# From Pilgrimage to Phenomenon

What began as a sacred journey has become an engine of growth, culture, and opportunity.

In less than a decade, annual visitors have tripled, supported by corridor developments, improved connectivity, and cultural investments.

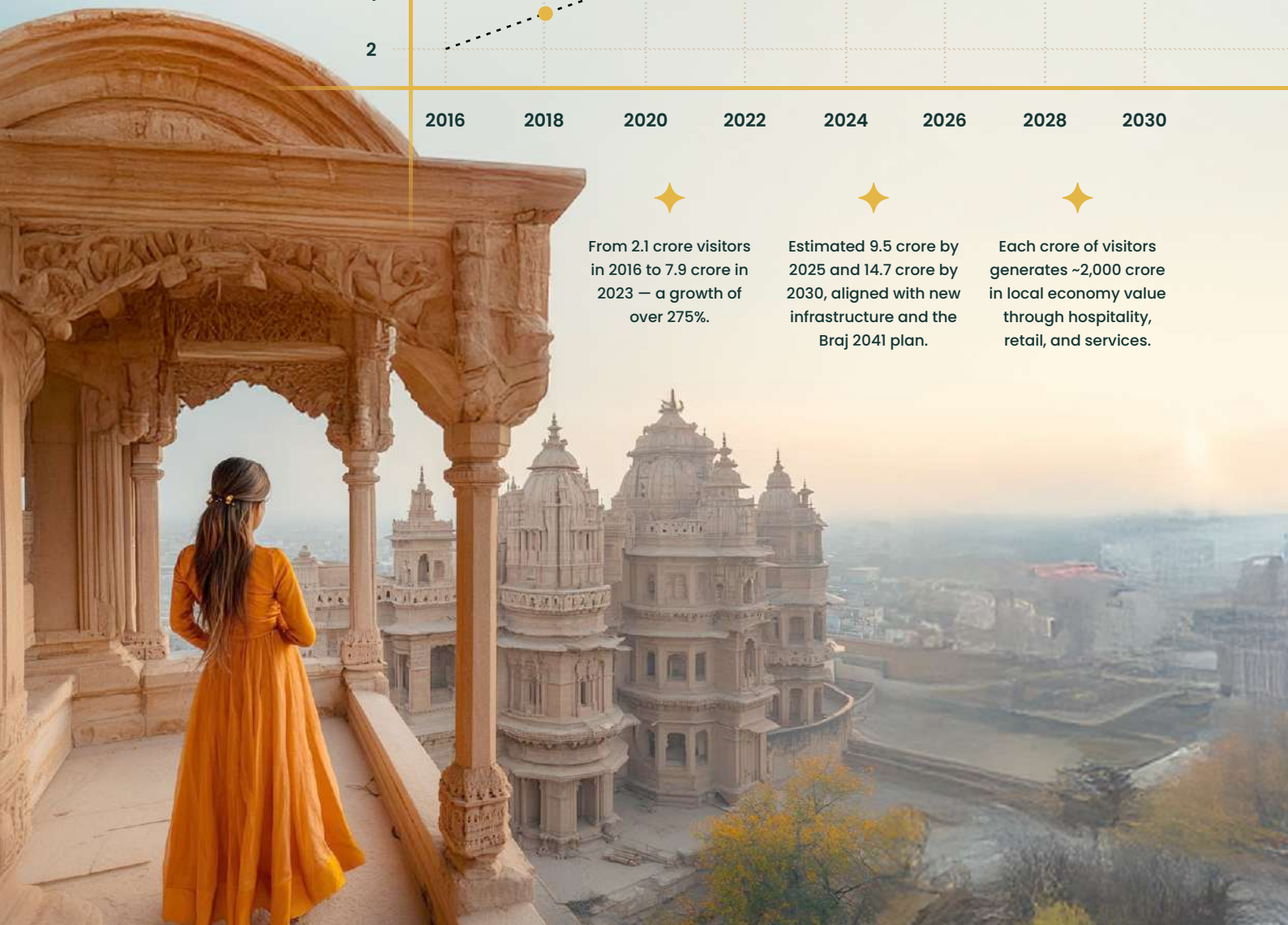
Looking ahead, projections toward 14.7 crore visitors by 2030 place Vrindavan among India's fastest-growing spiritual and experiential destinations.



From 2.1 crore visitors in 2016 to 7.9 crore in 2023 – a growth of over 275%.

Estimated 9.5 crore by 2025 and 14.7 crore by 2030, aligned with new infrastructure and the Braj 2041 plan.

Each crore of visitors generates ~2,000 crore in local economy value through hospitality, retail, and services.



# The Comfort of Connectivity

**Vrindavan sits at the intersection of heritage and high-access.**

The Yamuna Expressway, Nh19, and Mathura Junction create a dependable travel grid, while the upcoming Noida International Airport adds a decisive air gateway.

With YEIDA-led upgrades and new connectors, airport access and regional dispersion improve substantially – converting spiritual demand into sustainable stay, hospitality, and living ecosystems.

**Connectivity here is not an afterthought; it is a design principle.**



## Delhi – Vrindavan:

~150–182 km via NH19 and Yamuna Expressway; typical drive ~3–4 hours, depending on origin and traffic.



## Agra – Vrindavan:

~89 km by road (62 km aerial); direct access via Yamuna Expressway corridor.



## Noida International Airport (Jewar) > Vrindavan:

~89 km by road (62 km aerial); direct access via Yamuna Expressway corridor.



## Rail:

Mathura Junction – the nearest major station – ~13–16 km from Vrindavan with excellent national connectivity.



## Corridor Momentum:

YEIDA's ongoing expressway upgrades and new 25 km connector with EPE cloverleaf strengthen last-mile airport access.



# The Braj Corridor Vision

When heritage becomes  
infrastructure, the divine  
finds direction.

The Braj Corridor is not merely a  
development plan — it's India's most  
significant fusion of faith and  
infrastructure.

Spanning over 250 km, this 30,000 crore master  
vision interlinks the holy towns of Mathura,  
Vrindavan, Govardhan, Barsana, and Nandgaon  
through the 84 Kos Parikrama Marg.

Projects like the 500 crore Banke Bihari Temple  
Corridor and the 5,000 crore Parikrama  
upgrades will redefine spiritual tourism into  
sustainable urban growth.

Positioned closest to this golden circuit, Trinity  
Vrindavan becomes part of the region's cultural  
and infrastructural rebirth — a future-ready  
sanctuary rooted in timeless legacy.



✦ ₹30,000 Cr  
Braj 2041  
Development Plan

A long-term cultural and infrastructure vision elevating Braj into a world-class spiritual and heritage region.

✦ ₹500 Cr  
Banke Bihari  
Corridor Redevelopment

Enhancing access, safety, and crowd movement around the sacred temple while preserving devotional essence.

✦ ₹5,000 Cr 84 Kos  
Parikrama Marg  
Upgrade

Reviving the ancient pilgrimage route with improved pathways, rest points, lighting, and spiritual wayfinding.

✦ 200+ km  
Spiritual Connectivity  
Network

Integrated walkways and access roads linking temples, ghats, and ashrams into a unified sacred circuit.



'THE BRAJ CORRIDOR



*Trinity Vrindavan in the  
5 km Growth Radius*

Strategically located at the heart of Vrindavan's most active spiritual, hospitality, and infrastructure development zone.

# Scanning the Headlines

A showcase of credible press coverage reflecting the confidence of institutions, guests, and communities in the evolving landscape of Vrindavan.



## Uttar Pradesh CM unveils ₹30,000-crore development plan for Brij region

On the occasion of Janmashtami 2025, Uttar Pradesh Chief Minister Yogi Adityanath announced a landmark ₹30,000 crore master-plan for the Braj region—including Mathura, Vrindavan, Barsana and Gokul—to restore its spiritual heritage and modernize infrastructure.



## YEIDA to Develop 30-Acre Elevated Parking & Bridge in Vrindavan

The Yamuna Expressway Industrial Development Authority (YEIDA) has announced a new infrastructure project in Vrindavan featuring a 30-acre multi-level parking facility paired with an elevated bridge, designed to manage visitor traffic and enhance access ahead of major temple redevelopment work.



THE ECONOMIC TIMES

## UP Launches Five New Cities Near Jewar Airport

In a strategic move unveiled in April 2025, the Uttar Pradesh government has outlined plans to develop five major new townships across 56,000 hectares around the upcoming Jewar Airport — including industrial hubs and tourism-focused cities — signalling a decisive shift in urban expansion beyond Noida.



## Government Approves ₹1,645 Crore Connectivity Link

The Centre has green-lit a ₹1,645 crore project to build a 15 km, six-lane road linking the Yamuna Expressway (at km 101) with the Delhi–Agra Highway near Joint in Mathura.

The route will pass close to the township, incorporate a bridge over the Yamuna River and a designated exit for Vrindavan — significantly improving access for pilgrims and tourists.

BRAJ RISING

## *Where Devotion Meets Development*

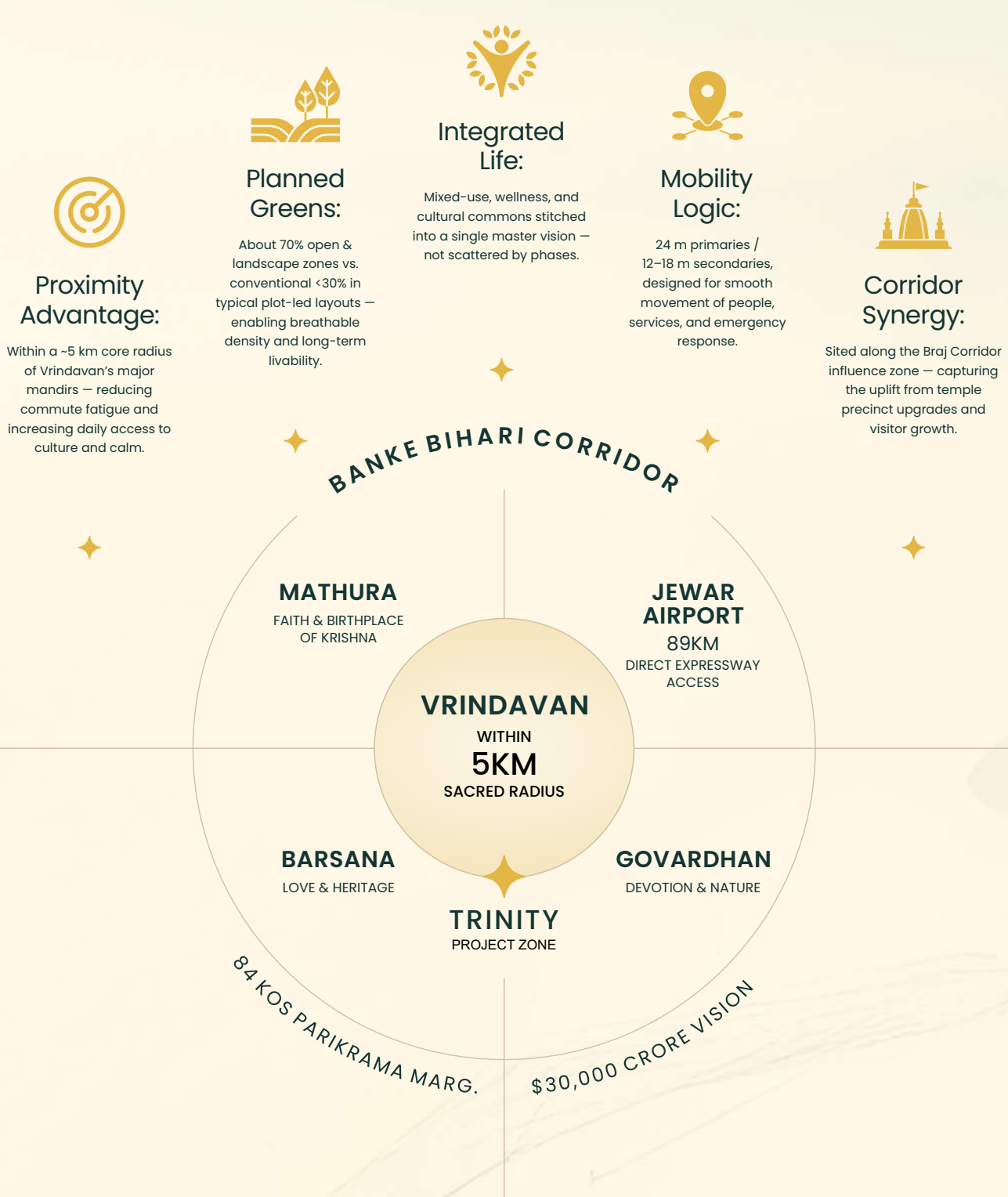
New roads, city expansions, and smart connectivity are reshaping Vrindavan–Mathura. Travel gets smoother, crowds ease, and the region grows while its soul stays intact.

# Inside the Sacred Radius

A contiguous masterplan in Vrindavan's sacred heartland.

The Braj Corridor represents the sacred and infrastructural backbone of India's cultural revival – connecting Mathura, Vrindavan, Govardhan, Barsana, and Nandgaon under a 30,000 crore masterplan.

Trinity Vrindavan stands closest to this epicenter – within a 5 km sacred radius – benefiting directly from the corridor's spiritual and infrastructural evolution.





## Habitation Growth:

Between 2020 – 2030, 8 of 10 new residential projects in Vrindavan are concentrated within this 5 km belt – driven by accessibility, safety, and temple proximity.



## Land Value Index:

Recorded appreciation in this corridor has averaged 14 – 16 % annually, outperforming outer periphery zones by over 40 %.



## Tourism Growth:

Annual tourist influx within this zone now exceeds 2.3 crore visitors, up 58 % since 2018 (Department of Tourism UP).



## Hospitality Expansion:

More than 70 % of new hotel and homestay licenses have been approved in this radius since 2022.



## Infrastructure Spend:

The Braj Corridor and associated infrastructure works have injected 30,000 crore+ in direct and allied development projects within this circle.

# Growth Has a Center – You're Standing in It

Imagine a circle on the map – a perfect 5 km radius.

Inside it lies the majority of Vrindavan's current and future development: hotels, roads, hospitality, and homes.

Trinity Vrindavan sits not at the edge of that circle, but at its core. Investors look for numbers; visionaries look for patterns.

The 5 km radius surrounding Trinity Vrindavan has witnessed the fastest urban transformation, highest land absorption, and most robust appreciation rates across Mathura district.

It's where pilgrim routes, infrastructure projects, and government investments overlap – forming the growth epicenter of Braj's spiritual and economic revival.



# Designed for Flow, Planned for Life

Architecture meets urban planning to create ease of movement and clarity of space.

Urban planners call it flow hierarchy — we call it common sense crafted to perfection.

At Trinity Vrindavan, each entry is a statement of arrival, each exit a gesture of ease. The grid connects to regional arteries without interference, offering residents and visitors the luxury of access without chaos. In form and function, the plan reflects discipline that will sustain value for decades.



## Dual Access Design:

Primary 24 m road connects to the Braj Corridor link; secondary 18 m service exit links to internal habitation clusters — ensuring continuous two-way flow.



## Pedestrian Boulevard:

12 m wide green walkway connecting plots and villas for slow mobility and community movement.



## Three-Side Open Site:

Facilitates natural ventilation, security loops and emergency vehicle turns within 90 seconds.



## Connectivity Radius:

NH-19 junction  $\approx$  4 km; Yamuna Expressway  $\approx$  20 min; Mathura Junction  $\approx$  25 min.



## Smart Ingress Logic:

Segregated entry for residents and service vehicles to maintain noise and traffic discipline.

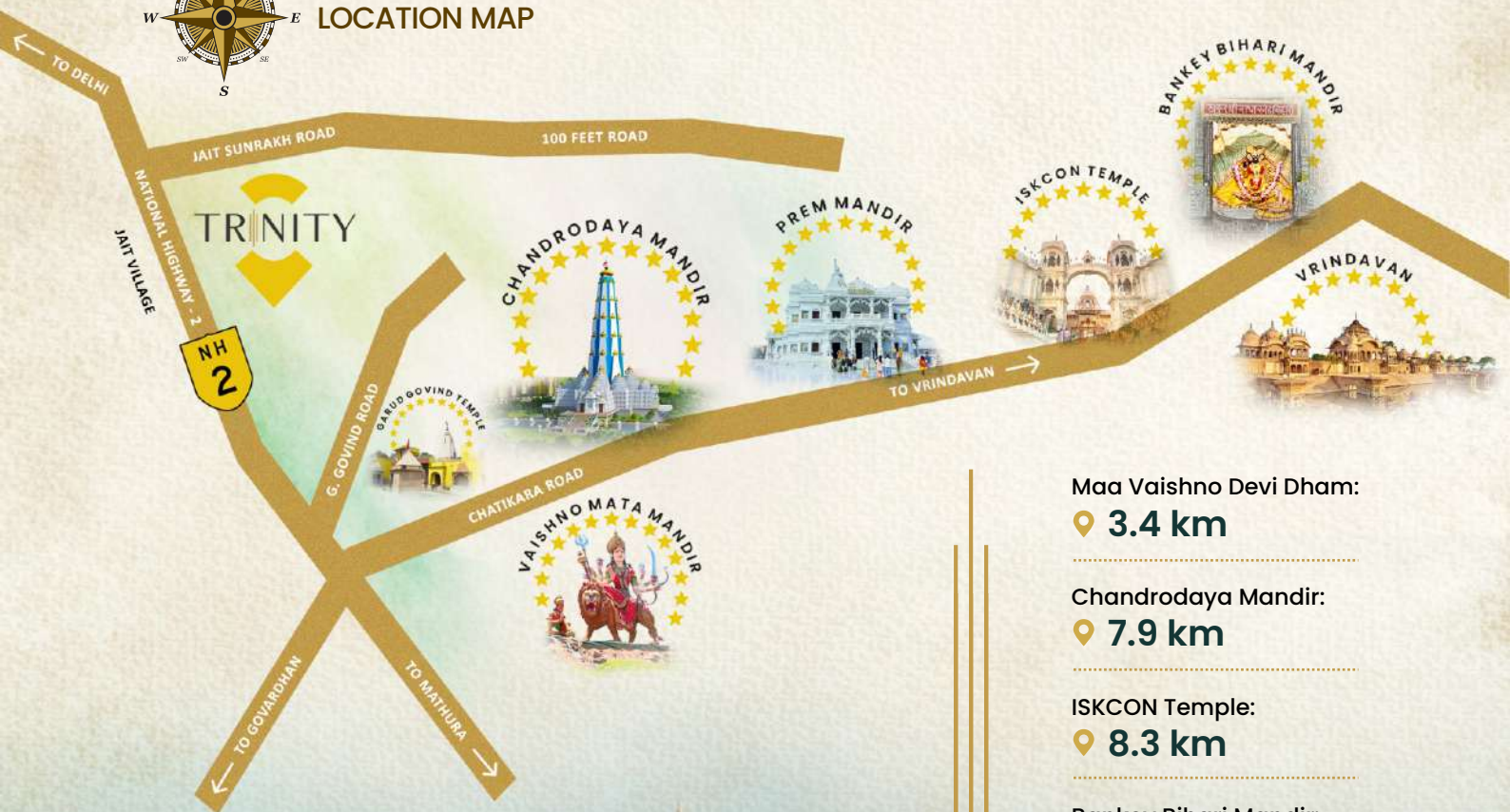


# Steps away from temples, minutes away from the city

Perfectly placed in Vrindavan's spiritual heart, yet seamlessly connected to every modern convenience.

Trinity Vrindavan offers unmatched connectivity in a serene spiritual setting. Located just 200 meters from NH-2, the township is within minutes of Banke Bihari, ISKCON, and Prem Mandir, while Mathura is only a 15-minute drive away.

With seamless access to highways, railway stations, schools, hospitals, and shopping hubs, you enjoy the best of Vrindavan's spiritual essence alongside modern-day conveniences.



Maa Vaishno Devi Dham:

📍 **3.4 km**

Chandrodaya Mandir:

📍 **7.9 km**

ISKCON Temple:

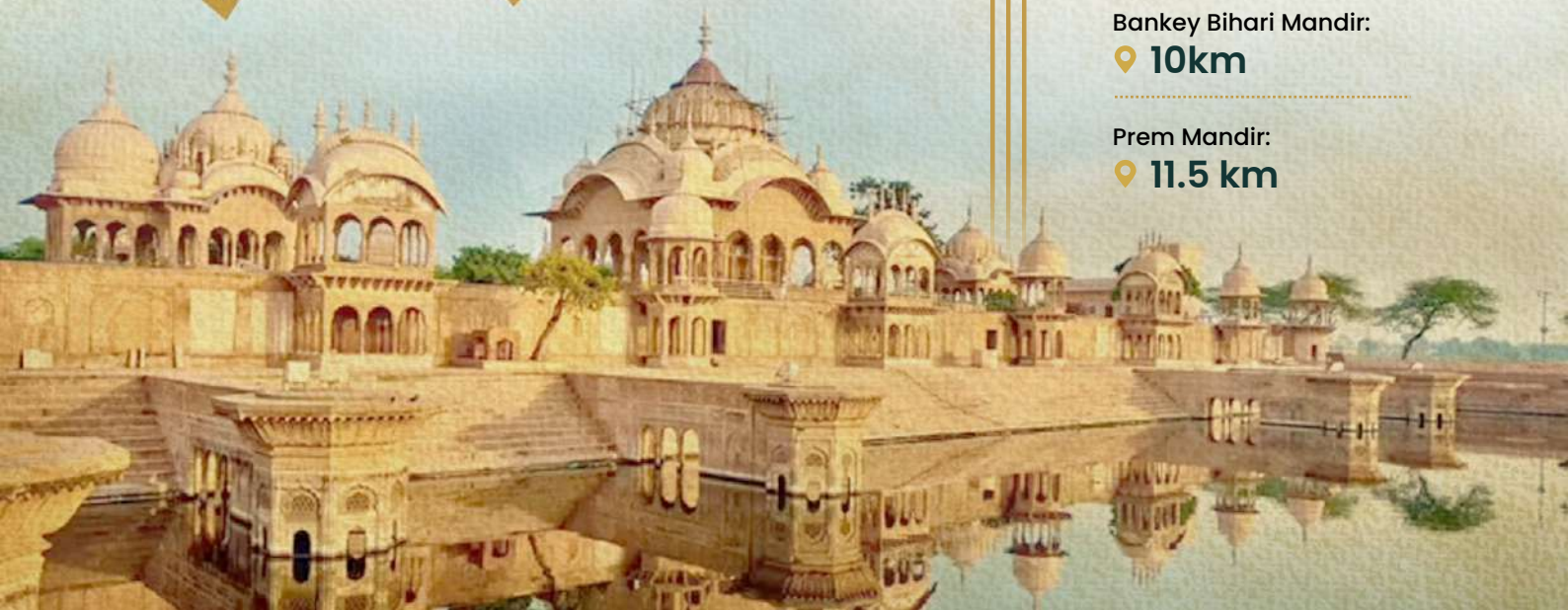
📍 **8.3 km**

Bankey Bihari Mandir:

📍 **10km**

Prem Mandir:

📍 **11.5 km**



# Masterplanned for Mind, Body & Soul

A township crafted on  
Vastu-aligned grids and  
open-air corridors.

The architect's vision balances the  
sacred and the structural.

Roads flow like Yamuna tributaries,  
open greens resemble temple courtyards, and  
built forms echo classical proportions. The  
township's blueprint reflects foresight – from  
Vastu compliance to sunlight optimization –  
ensuring harmony between tradition and  
technology. Trinity Vrindavan is where planning  
transforms into poetry.



## AQI Level Below 100

Breathe cleaner, healthier air and live  
in a wellness-focused setting where  
the air stays under AQI 100.



## Design Philosophy:

Guided by Vastu Shastra and the  
sacred grid principles of Vrindavan,  
ensuring energy balance across all  
plot alignments.



## Open Space Ratio:

Over 70 % green and open area,  
including meditation courtyards,  
tree-lined boulevards, and reflection  
zones.



## Zoning Logic:

Segregated yet connected – with  
villas, villaments, and apartments  
thoughtfully arranged to preserve  
privacy and coherence.



## Gated 24x7 Security with CCTV

A thoughtfully planned gated  
sanctuary designed for privacy,  
peace, and elevated living.



## Landscape Flow:

Central green spine inspired by  
Yamuna's meandering path –  
symbolizing continuity and calm.







TRINITY VRINDAVAN



*Phase 1 —  
A Living Vision Begins*

Experience the beginning of a timeless township — carefully crafted, consciously designed. Every home draws inspiration from Vrindavan's stillness and Yamuna's flow.

# Come Home to Trinity Vrindavan

The spirit of Vrindavan — now shaped into a community that welcomes you every sunrise.

Every elevation, courtyard, and pathway embodies the harmony of devotion and design.

These homes are not mere structures — they are sanctuaries that reflect light, silence, and serenity. In every render, the promise of peaceful living becomes visible.

**Trinity Vrindavan isn't just a development — it's a homecoming.**



Trinity Vrindavan is crafted not just for today's seekers, but for generations who'll inherit both serenity and strength.

Phase 1 brings together thoughtfully planned plots, limited-edition villaments, and elegant apartments – all anchored in design, detail, and purpose.

Created to attract both investors and residents who seek not just value, but a sense of belonging.



## Plots

Spacious, Vastu-aligned land parcels designed for future-ready living – with easy access to greens and internal circulation.



## Villas

Limited-edition hybrid homes that combine the independence of a villa with the simplicity of an apartment – private terraces, shared gardens, curated luxuries.



## Apartments

Limited-edition hybrid homes that combine the independence of a villa with the simplicity of an apartment – private terraces, shared gardens, curated luxuries.



# The Trinity Experience

Trinity Vrindavan balances spiritual ambience with modern comfort to create a serene residential experience.



2,000 Sq. ft. Stone Mandir



Recreational Hall  
(Gathering upto 4000 persons)



24/7 Security With Gated Access & CCTV Surveillance



Yoga Center with Certified Instructor\*



Dedicated Kids' Play Area



Commercial Zone for Day-to-Day Needs



60% Open Green Area



Mandir Darshan Every Day via Special EV Vehicle



Housekeeping Facility Available\*



Sattvik Restaurant Inside the Premises

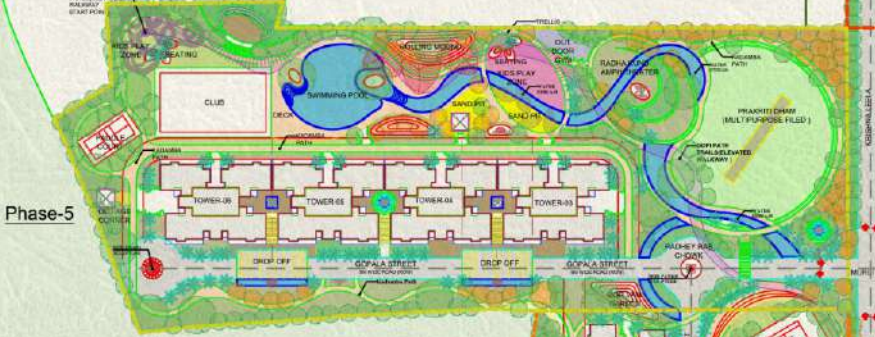




Plots Phase-1



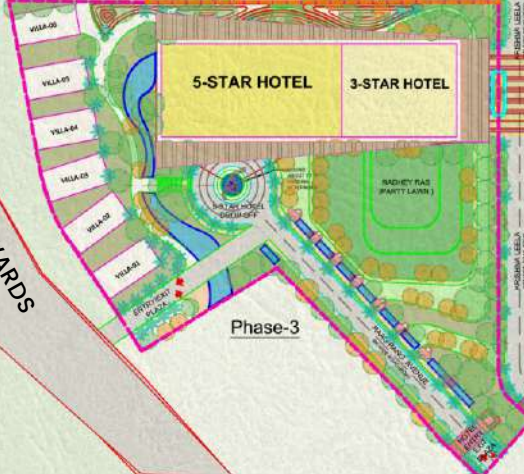
Phase-2



Phase-5



Phase-4



Phase-3

AREA LEGENDS:

Phase-1	--- (Red dashed line)
Phase-2	--- (Blue dashed line)
Phase-3	--- (Green dashed line)
Phase-4	--- (Yellow dashed line)
Phase-5	--- (Purple dashed line)

Chhatikara to Bankey Bihari Temple

100 FT. WIDE EXISTING ROAD TOWARDS ISKCON & BANKE BIHARI TEMPLE

NH -44 Delhi to Agra



# TRINITY

VRINDAVAN

A  
*Confluence*

of devotion, design &  
destiny.

Between the whisper of the Yamuna and the pulse of a  
32,000-crore vision lies an address unlike any other.

Here, faith becomes form, stillness becomes structure,  
and every square foot carries the equilibrium of mind,  
body and soul.

Trinity Vrindavan is not built—it is composed; a sanctuary  
for those who value permanence over possession.

Come home – to Vrindavan, to  
stillness, to yourself.

**7900 209 696**

Site Office: Jait | Main Delhi-Agra Highway | Vrindavan, UP

[www.trinityvrindavan.com](http://www.trinityvrindavan.com)

Disclaimer: The Project "Trinity Vrindavan" is registered with UP RERA having registration number UPRERAPR783464/02/2026 available at <https://www.up-rera.in> [<https://www.up-rera.in>]. The Project is being developed by Trinity Tulsivan Realty Private Limited ("Promoter"). "Trinity Vrindavan" at Vrindavan is only for information and inspirational purposes only and is presented as general information. Sale is subject to the terms of application form, agreement for sale and such other documents to be executed between the parties. The information, images, artistic impressions, layouts, specifications, amenities, elevations, landscape features, and infrastructure depicted in this brochure / advertisement are purely illustrative and indicative in nature. They are conceptual representations and may differ from the actual development. All plans, specifications, areas, pricing, and other details are subject to change, revision, alteration, or modification as may be required by the developer, architects, or statutory authorities without prior notice. The developer reserves the right to amend, revise, or substitute any part of the project in compliance with applicable laws and regulations. All proposed developments are to be undertaken by third parties or government authorities and are subject to requisite approvals. \* The information regarding upcoming infrastructure projects has been sourced from relevant official government sources. Such projects are proposed by the concerned government authorities or agencies and remain subject to their approvals, timelines, and implementation. Prospective buyers are advised to independently verify the status, timing, and extent of such infrastructure with the concerned authorities. Distance and timelines are indicative and may vary subject to weather, transport and infrastructure facilities to be provided. The information provided is based on data from UP Tourism, India Watch, Times of India, ANI News, Hindustan Times and is for general reference only. The Promoter does not validate the accuracy of this data and is not responsible for any decisions made based on it. Prospective buyers are encouraged to conduct their own verification. The designs/pictures are for artistic impression only.